

# UHL

## Collectors Society



Since 1849

AUGUST / SEPTEMBER 1994

What A Super 1994 Convention!

For those of you that were unable to make the convention this year I hope the following pages will fill you in on what you missed. There was such a large turn out for the Friday evening dinner and auction that the banquet room we were in was wall to wall with Uhl collectors. Well let me start at the beginning.

By 12:00 noon on Friday the pool area of the hotel was in a buzz. Collectors were moving into thier rooms and some had begun to unpack those treasures that we all had been waiting a year to see and purchase. Only at the Uhl Collectors Convention can you find as many different colors, shapes, and sizes of Uhl as seen here.

At 3:00 P.M. Dale Blann and his work force started to distribute the commemorative. The line was long at all times from the beginning to the 5:00 P.M. cut-off time. This years piece was a blue and white shoulder jug with the Uhl Collectors logo and a Dillsboro stork on the reverse side with the date below. All indications are, most members were happy with this piece.

Registration began at 4:00 P.M. and closed at 6:30 P.M. Also during this time members could consign two items per membership at a fee of \$5.00 per item for the auction.

Dinner was served promptly at 6:30 P.M. and a total of 510 people were served. How about those numbers for just a nine year old club. A three piece chicken dinner with mashed potatoes and green beans and a roll was served. Well this should have no complaints because it was free for two members per membership. what a deal!

Around 7:30 P.M. a very lengthy auction began with a total of 194 items being consigned. The auction lasted until about 10:00 P.M. After the smoke cleared and all of the items were totaled, 138 pieces did sell and 56 were bought back by the sellers. The most impressive part is of the 138 that did sell a total of \$19,765.00 was raised for the sellers. Not too bad for a bunch of old pottery??????

After the auction ended the room to room socializing began and lasted into the wee hours of the morning. Many smiling faces

were seen walking around with brown bags, good finds maybe???

Saturday morning came quick as many members lined up at 7:30 A.M. for the sale that began at 8:00 A.M. Dealers started to setup at 7:30 and were ready when the doors opened at 8:00. As the doors opened the room quickly filled to capacity and the buying was very brisk. Many dealers said they had good sales, but wished for more. About 32 dealers setup for the sale, which gave buyers many items to choose from.

At 9:00 A.M. the commemoratives were distributed again until 10:00 A.M.

The business meeting started at 10:00 A.M. with Dale Blann our president opening the meeting. Tom Uebelhor read the minutes of the 1993 convention meeting. He also explained our financial condition as a club.

This year we voted to fill a seat on the Board of Directors. Steve and Tina Brundage, and Dave and Tammy Lottes ran for the position. Dave and Tammy Lottes were voted in by a count of hands to fill the vacancy. The out going member was Bill Swanson who did a wonderful job for his three year term.

Next Tom and Donna Uebelhor were the only nominees for the Secretary - Treasurers position and were easily voted in.

Dale then presented Bill Swanson, Tom and Donna Uebelhor, and Tim and Pam Hodges with a special made commemorative jug. Each had the members name and the office they served and the date of their term. All members that serve an office in the future will be presented with a special commemorative.

As the meeting was closed the drawing for the fifteen extra commemoratives was held for the members that were present. Each number that was drawn had the opportunity to purchase an extra commemorative for \$25. Everyone drawn was more than eager to get that second commemorative.

Below is Bill Swanson with his special commemorative.

THANKS AGAIN BILL!!!!!!





FROM THE DESK OF DALE BLANN

The convention for this year is now history and we hope all that attended had an enjoyable two days. We were very pleased that all seemed to progress without much ado. (If it works, don't fix it) There were at least eight families that checked into the motel on Thursday, giving themselves a running start on the activities.

We sold and issued 498, 1994 commemoratives and three special colored jugs for auction. We shipped 116 jugs and have 4 in reserve in case any are broken by UPS during shipping.

We wish to thank all the people who helped at the convention. I could not possibly list all your names but thank you so much.

Already Thinking Of Next Year

Dale & Leah Blann

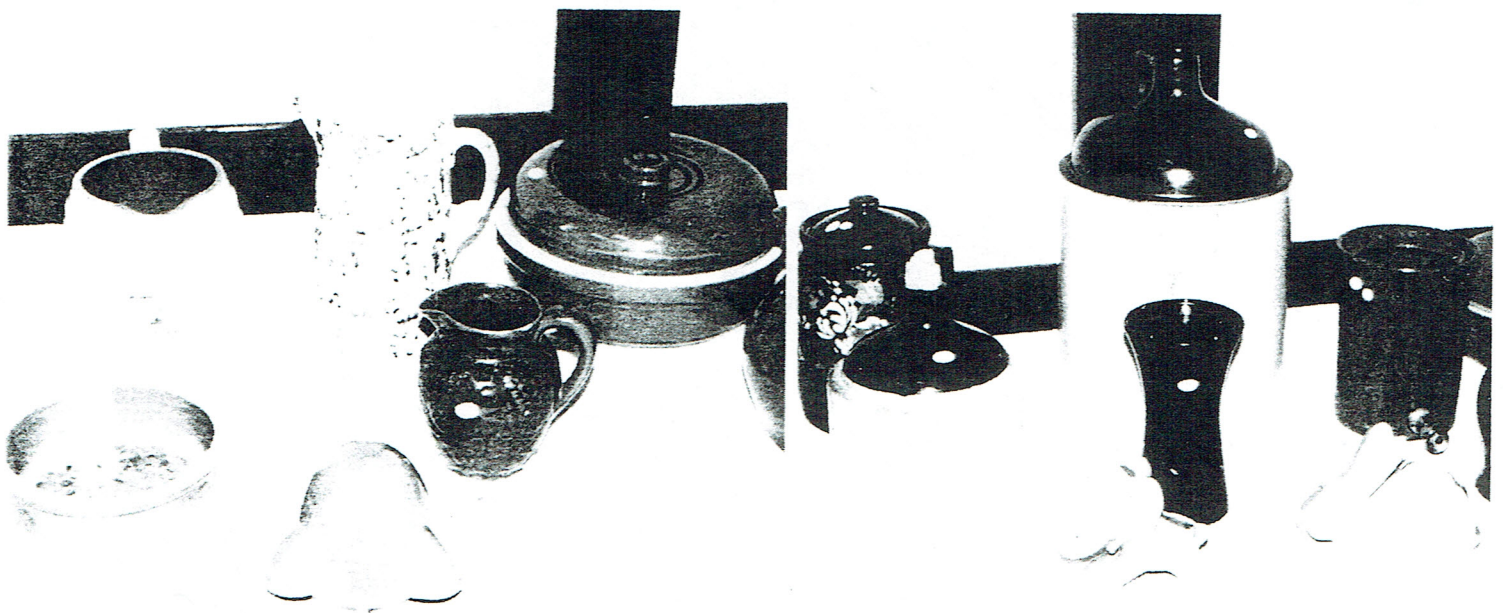
\*\*\*\*\*

On the following pages you will see the auction results with some photos.

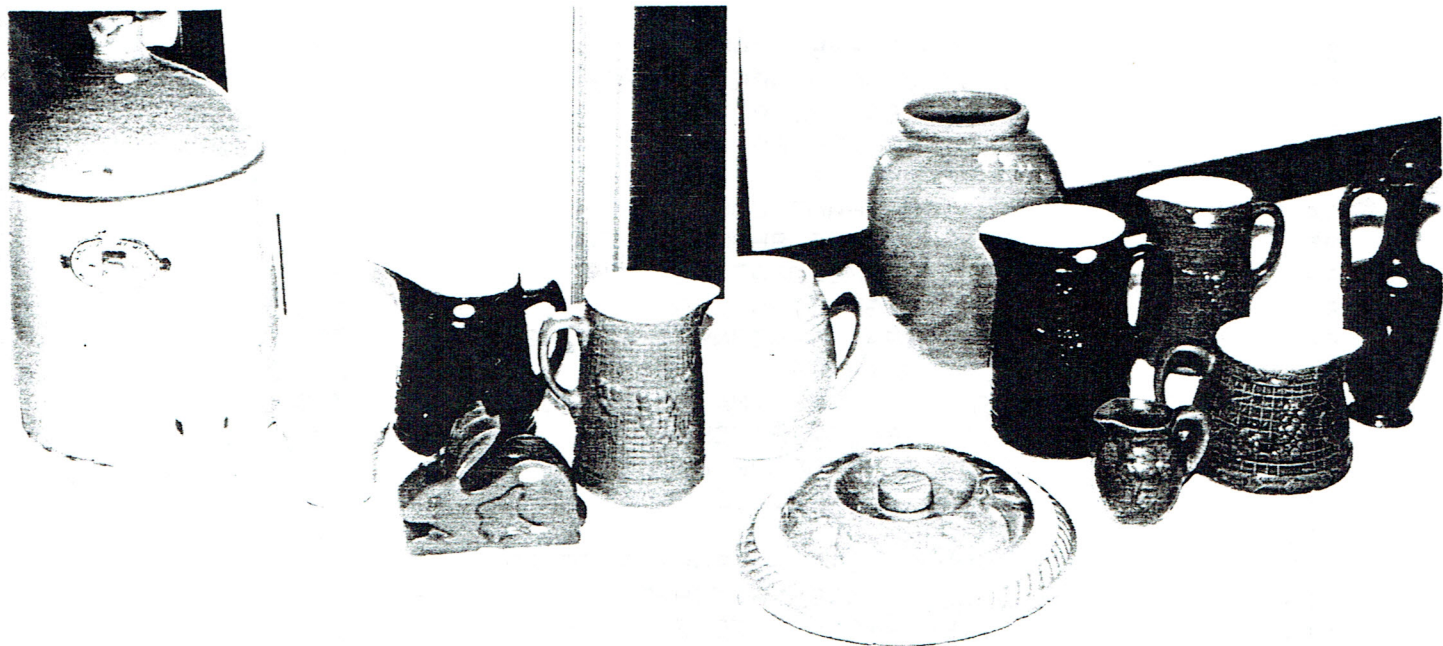


ITEM NO.	DESCRIPTION	PRICE
1	BLUE OIL JAR	\$80
3	GREEN HANDTURNED VASE	50
4	BLUE HANDTURNED POT	25
5	TAN MINI JUG	110
6	2 QT BLUE GRAPE PITCHER	80
8	BOSTON BAKED BEAN POT	25
10	DARK BLUE ELEPHANT PLANTER	650
11	LIGHT BLUE ELEPHANT PLANTER	175
13	SQUAT BLUE GRAPE PITCHER	250

14	1987 COMMEMORATIVE MUG	350
15	1988 COMMEMORATIVE JUG	200
16	10 GAL JAR	40
17	8 GAL 2 HANDLED JUG (DAMAGED)	25
19	PINK 3 QT GRAPE PITCHER	300
20	BLUE HANDTURNED PITCHER	250
21	BLUE LINCOLN PITCHER	150
22	TAN RING JUG	225
24	1939 CHRISTMAS JUG	250
25	BLUE OIL JAR	200
26	BLUE OIL JAR	250
28	MEIERS EGYPTIAN JUG	55
29	2 GAL CHURN	125
30	1 INCH MINI JUG	110
32	LARGE BLACK PIG BANK	550
33	#158 TAN VASE	45
37	1990 COMMEMORATIVE JUG	100
38	1987 COMMEMORATIVE MUG	420
40	#183 BLUE BULBOUS GRAPE PITCHER	75
41	BLUE ROASTER	160
43	BLUE & WHITE SPONGE PITCHER	170
44	1939 CHRISTMAS JUG	225
45	MCCURDY BOOK	65
46	BLUE & WHITE LINCOLN PITCHER	175
48	1 GAL SHOULDER JUG	45
49	YELLOW MINI ELEPHANT JUG	60
50	BLACK COOKIE JAR	20

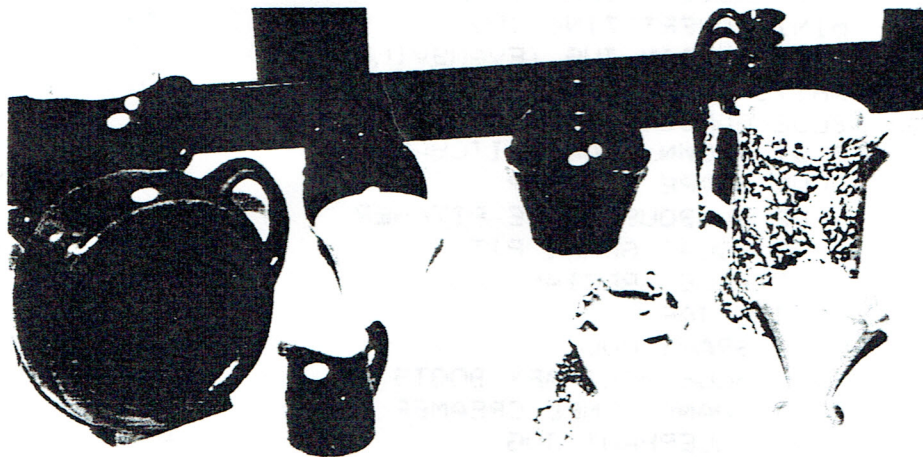






51	BLACK VASE	25
52	4 GAL JUG	60
53	BLUE LID FOR GREASE JAR	40
54	PINK SYRUP PITCHER	50
55	YELLOW CAT PLANTER	35
56	1939 CHRISTMAS JUG	195
58	BLUE MEAT ROASTER	170
60	GREEN HANDTURNED VASE	50
61	BLUE ELEPHANT PLANTER	125
62	BLACK MATCH HOLDER	70
63	BLUE & WHITE MINI SHOULDER JUG	125
64	TAN RABBIT PLANTER	80
65	MINI ADVERTIZING JUG	190
66	TAN GRECIAN JUG (EVANSVILLE ADV)	225
67	WHITE CANTEEN (BOONVILLE IMP)	160
71	BLUE GARDEN VASE	40
72	3 QT BROWN GRAPE PITCHER	75
73	BLUE GRAPE PITCHER	110
74	BLUE BULBOUS GRAPE PITCHER	100
75	BLUE SQUAT GRAPE PITCHER	110
76	#162 BLUE GRECIAN JUG	80
77	12 GAL JAR	70
78	BLUE GRAPE MUG	80
79	PAIR BLUE MILITARY BOOTS	100
80	GREEN HANDTURNED CREAMER	40
81	BLACK ELEPHANT JUG	40
82	SPONGE ROASTER	80
83	BLUE DONKEY PLANTER	275
84	BLUE WASH BOWL	200

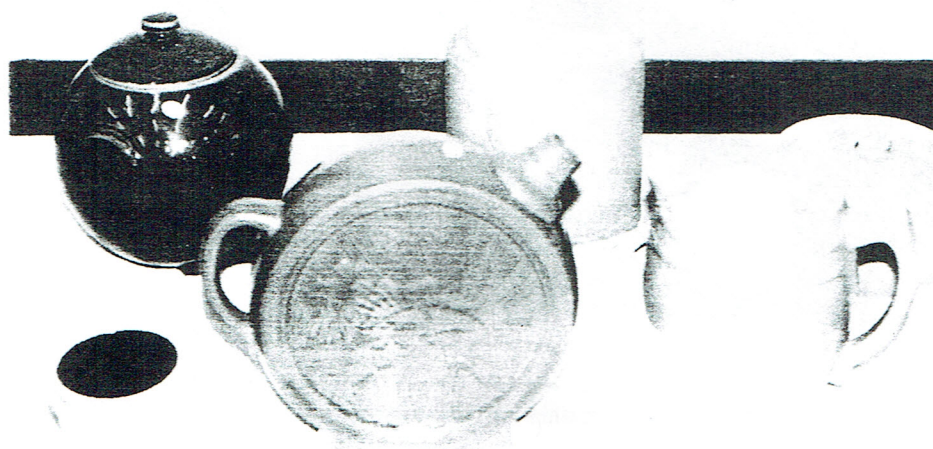
85	GREEN BARREL JAR	150
86	1 QT BLUE GRAPE PITCHER	80
87	BROWN BARREL PITCHER	40
92	BLUE FLOWER POT	60
93	BLUE BUTTER	50
94	TAN ELEPHANT JUG	70
95	PURPLE MINI SHOULDER JUG	60
96	1990 COMMEMORATIVE	60
97	PURPLE GRECIAN JUG	135
98	1940-1941 SEASONS GREETINGS JUG	350
101	BLUE SLIPPER	25
102	YELLOW MERRY XMAS RING JUG	725
109	#232 YELLOW PITCHER	30
110	3 QT BLUE GRAPE PITCHER	90
111	5 GAL EVANSVILLE JUG	90
112	15 GAL JAR	130
113	BROWN BULBOUS GRAPE PITCHER	40
114	BROWN BARREL PITCHER	30
115	BLUE BARREL PITCHER	60
116	BLUE PICKET FENCE BOWL	50
117	BLUE BELLIED PITCHER	110
118	BLUE HANGING STRAWBERRY PLANTER	40
119	BLUE BULBOUS PITCHER	80
120	#183 PURPLE BULBOUS GRAPE PITCHER	120
123	BLUE SALT & PEPPER	110
124	HARVEST JUG	200
125	7 GAL JAR	600
126	BLUE HANGING GRAPE SALT	225
129	PINK SALT & PEPPER	80
131	BLUE & WHITE WATER COOLER	100
132	BLUE & WHITE MINI CHURN (NO LID)	750
134	1 GAL COOKIE JAR	700
137	1942 CHRISTMAS JUG	225
138	YELLOW BASEBALL JUG (W/ ADV)	310
139	GREEN CANDLE HOLDER	130



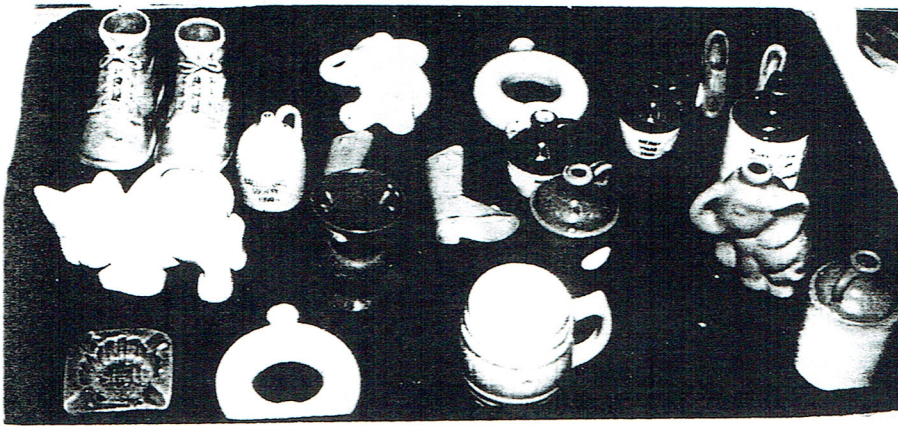
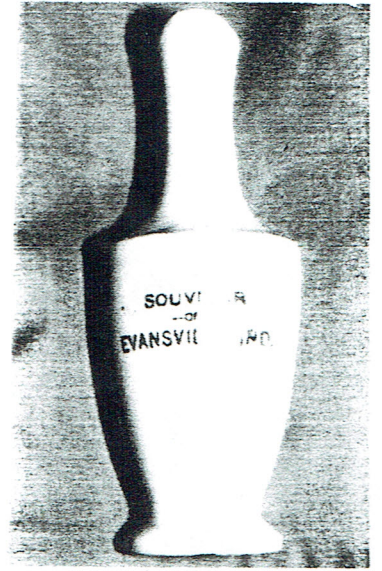
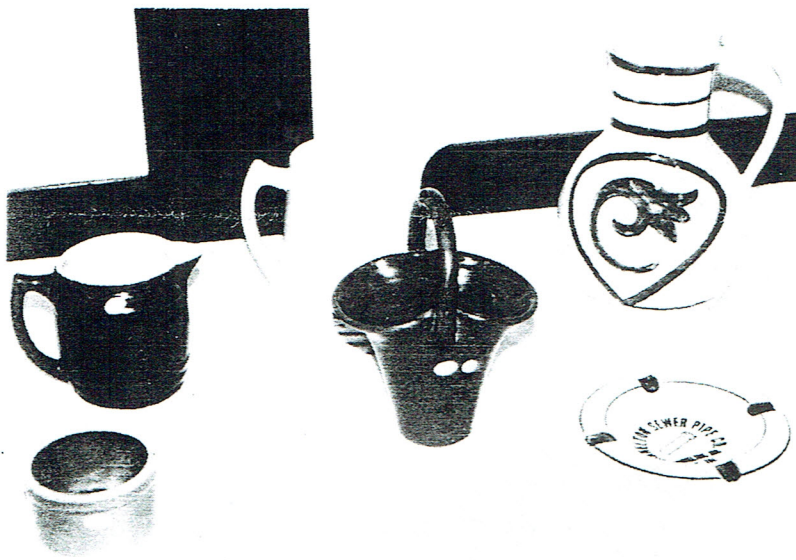
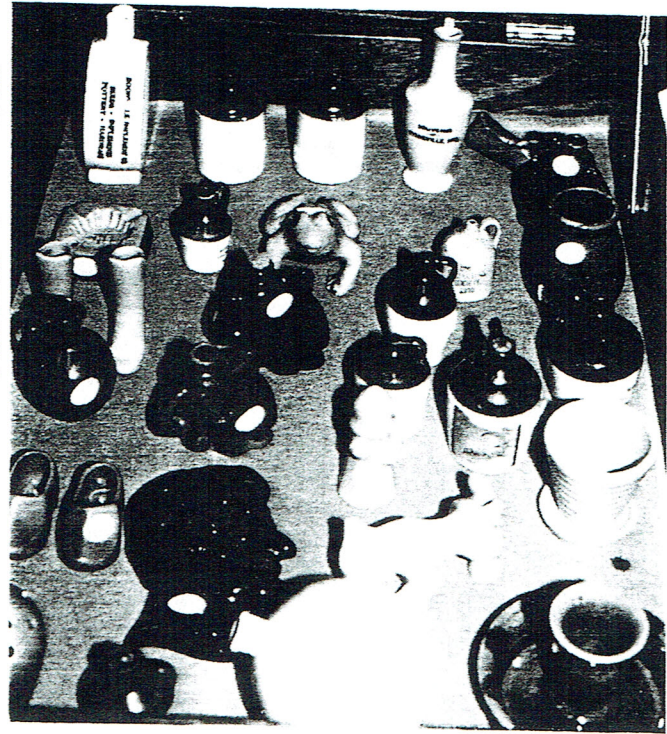
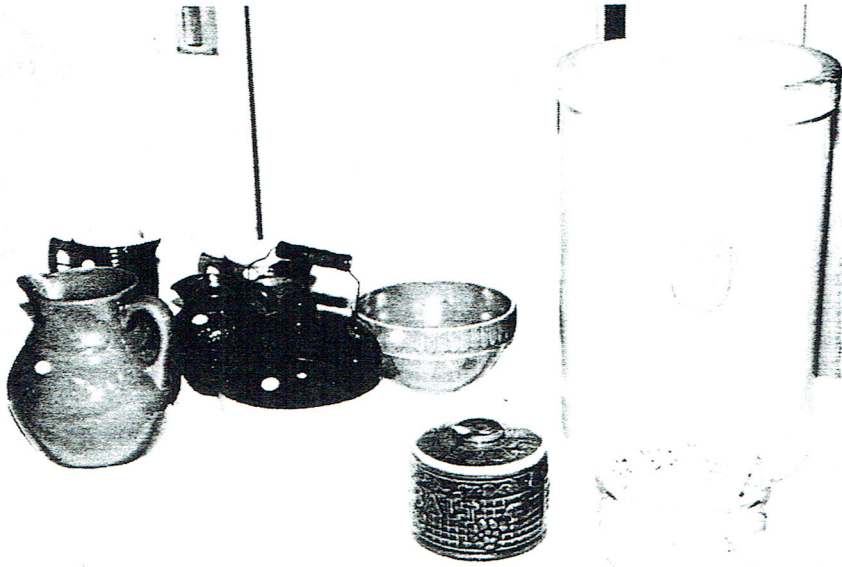


143	BLUE GRAPE PITCHER (W ADV)	200
144	BROWN & WHITE MINI ACORN SHOULDER	325
147	1987 COMMEMORATIVE MUG	400
148	GREEN PITCHER VASE	80
150	PEACH MINI FLOWER POT	130
152	BLUE LINCOLN PITCHER	350
155	PEACH DOG & FIRE PLUG	275
156	BLUE BUTTER CROCK	60
158	PINK HANDLED CASSEROLE	60
159	MCCURDY BOOK	70
161	TAN BARREL PITCHER	60
162	PEACH CASSEROLE	40
163	1993 COMMEMORATIVE	90
164	CHICKEN WATERER	25
165	BROWN GLOBE COOKIE JAR	45
166	2 PINK MUGS	110
169	#157 BLUE VASE	50
170	BLUE EGYPTIAN JUG	45
171	YELLOW STRAWBERRY PLANTER	20
172	PINK PLANTER	25
173	WHITE VASE	50
174	LARGE BROWN CANTEEN JUG	20
176	PINK LINCOLN PITCHER	130
177	BLUE ELEPHANT JUG	65
178	BLUE MILITARY BOOT	80
179	BLUE GRAPE PITCHER	120
180	RAMSBURG SALT & PEPPER	20
182	PURPLE MINI JUG	80
183	1993 CHRISTMAS JUG	50
184	1993 BLUE CHRISTMAS JUG	80
185	BLUE PRINT OF UHL POTTERY	30
186	BLUE PRINT OF UHL POTTERY	10
187	8 GAL 2 HANDLED JUG	140
189	1989 CHRISTMAS JUG	55
190	1/2 GAL JAR	60
192	1994 GREEN SPECIAL COMMEMORATIVE	325
193	1994 WHITE SPECIAL COMMEMORATIVE	300
194	1994 SPONGE SPECIAL COMMEMORATIVE	500

Only the items that did sell are listed above.







All of the previous photos were of the items on the auction on Friday evening. Some nice items and some handsome prices!!!



WELCOME NEW MEMBERS

CHARLES & MARIE BURNS	FRANCISCO	INDIANA
BRIAN & JANE CRESS	BISMARCK	ILLINOIS
BOB READLE	HUNTINGBURG	INDIANA
WAYNE & SUSAN BRINKMAN	FERDINAND	INDIANA
DENNIS & PEGGY FORLER	JASPER	INDIANA
GREG PARROTT	LAWRENCEVILLE	ILLINOIS
GARY WELLS	BRIDGEPORT	ILLINOIS
GENE GERKIN	VINCENNES	INDIANA
TRISTAN C BIRKEMEIER	GREENCASTLE	INDIANA
DAN & ALBERTA MCKINNEY	BOONVILLE	INDIANA
JO ELLEN BENKEN	W LAFAYETTE	INDIANA

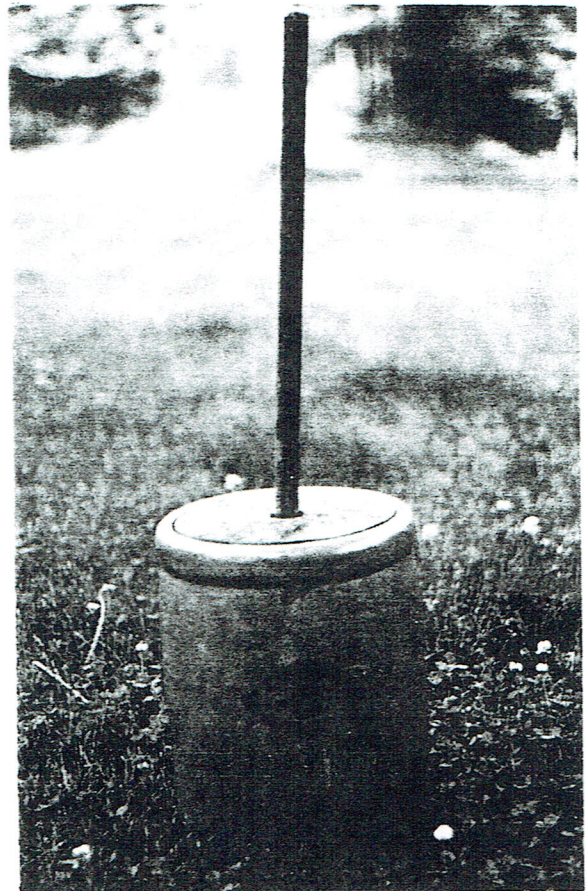
GLAD TO HAVE YOU ALL ABOARD!!

\*\*\*\*\*

A new collector just purchased this three gallon churn. They were wondering about it's age. I believe this stamp was used in the late 1800's and early 1900's at the Evansville based pottery.

If anyone has the exact dates in which each Uhl stamp was used would you please forward it to me so I can list it in the newsletter to help everyone date some of their pottery.

Also the churn has a wooden lid and the new owners are hoping to find the correct lid for their recent purchase.

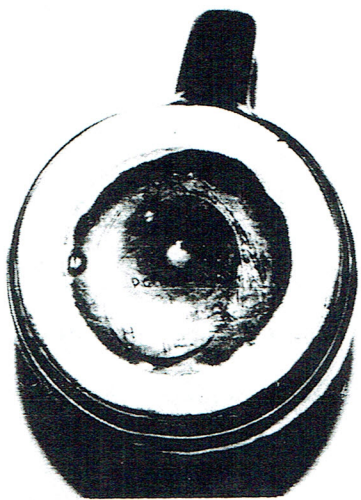


A non-Uhl member has a 1937 Christmas jug for sale. Contact Betsy Naumer at 618-542-4118 if you are interested.

\*\*\*\*\*

Here we go again. at the convention a member showed me an obviously non uhl mug. But it was stamped on the bottom with the round Huntingburg stamp. I have seen several of these fake stamps and was able to pick this one out right away. The UHL and P in Pottery were in capital letters but the rest of letters in Pottery were in small letters. Both must be capitals all the way through, UHL POTTERY CO. The photo of the stamp below is not very good but I hope it is legible when printed.

P.S. The stamp scratched off with the use of a pocket knife!



Looking for stories to print in the upcoming newsletters. If anyone has one to share please send it my way. Photo's or just little tid-bits will do also.

UNTIL NEXT TIME THANKS AND HAPPY HUNTING  
TIM HODGES  
1378 W ANDREW LANE  
JASPER IN 47546  
812-482-3016